



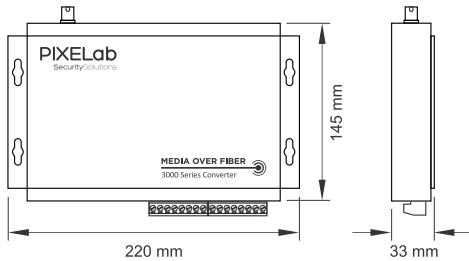
Fiber Optic Converter

- Video, Audio, Data, Ethernet,
Dry Contact & Phone

- Single mode fiber (20km/40km) or Multi mode fiber
- Multiple services over a single fiber
- Suitable for CMS Monitoring
- Easy installation and adjustment free



Dimensions

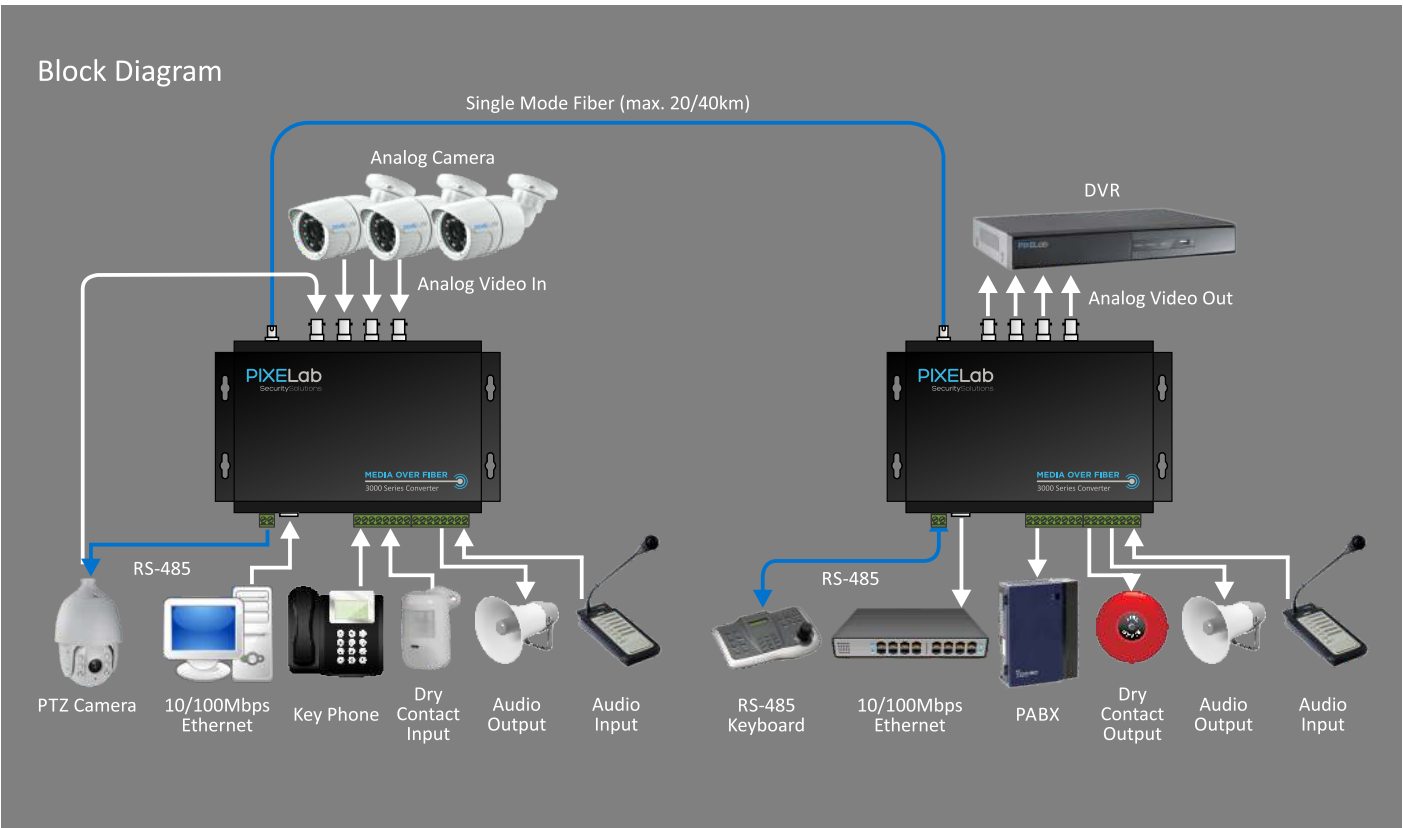


Technical Specifications

Video	Nos. of Channel(s)	1 ~ 4 nos. 1V p-p, 75Ω via BNC
	Bandwidth per Channel	6.5 MHz
	Sampling Rate	8 bit, 13.5 MHz
	Differential Gain / Phase	<1% / <1° (typical)
	SNR	67 dB (typical)
Audio	Audio Input/Output Level	1.5V p-p
	Sampling Rate	16 bit, 25 kHz
	ADC SNR (In / Out)	89 / 92 dB
Data	Type	RS-482, RS-422, RS-232
	Receiver Input Sensitivity	±200mV max
	Receiver Output Current	±10 mA
	Max Tx/Rx Rate	200 kbps
Ethernet	Compliance	IEEE 803.2 (2000)
	Transmission	Full / Half Duplex, Auto-Adapt 10/100 Mbps
	Max Frame Length	1536
	Max Bandwidth	Wire Speed 100 Mbps
Dry Contact	Nos. of Dry Contact(s)	Tx: 1 no. In (NO); Rx: 1 no. Out (NO)
	Dry Contact Input Ground Current	< 10 mA
	Dry Contact Rating (Rx)	220 Vac, 2A
	Max. Surge Voltage (Rx)	1500V, 10x 160μs
	Response Time	< 4 ms
	Max. Action Frequency	20 times / minute
	Dry Contact Lifespan (Rx)	>100k (2A, 30 Vdc); >500k (1A, 30 Vdc)
Optical Interface	Transmission Distance	0 ~20 km (Single Mode)
	Fiber Type	Single Mode, 50μm or 62.5μm
	Connector Type	FC Type
Power Requirements		5 VDC ± 10%; 2A
Operating Conditions		-20°C - 70°C, Humidity < 95% (non-condensing)
Dimension		220 x 145 x 33 mm
Weight		0.75 kg



Block Diagram



MODEL NUMBER:

FS3 V A C - D E

Nos. of Video Channels
Nos. of Audio Channels
Nos. of Dry Contact

E: Ethernet / T: Telephone
Nos. of Data (A: RS-485, B: RS-232, C: RS-422)

EXAMPLE: **FS3100-A** 1 Channel Video + RS-485
FS3410-E 4 Channels Video + 1 Channel Audio + Ethernet
FS3202-B 2 Channels Video + 2 Dry Contact + RS-232